

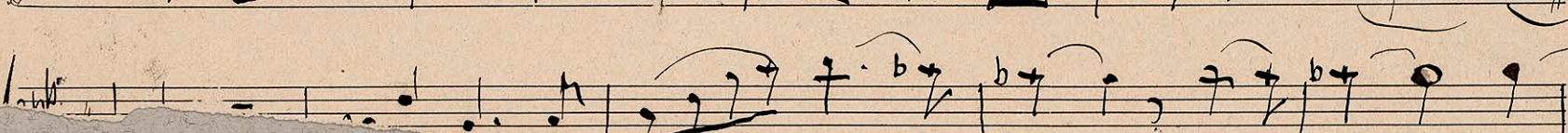
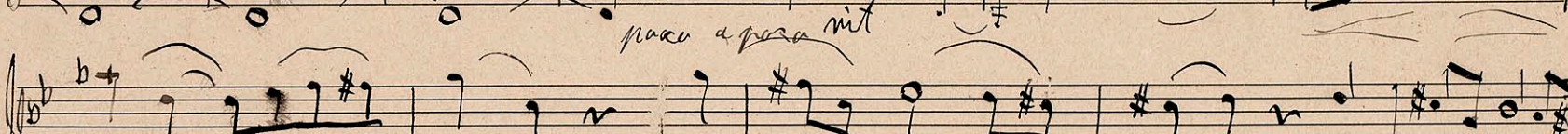
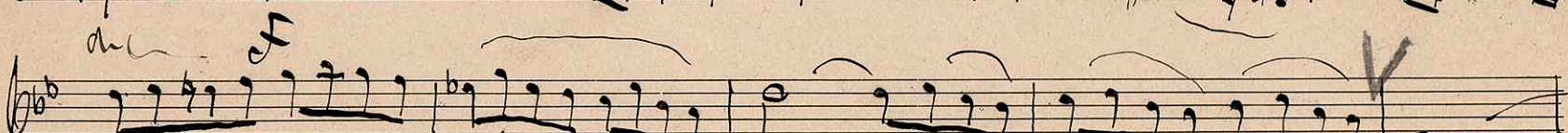
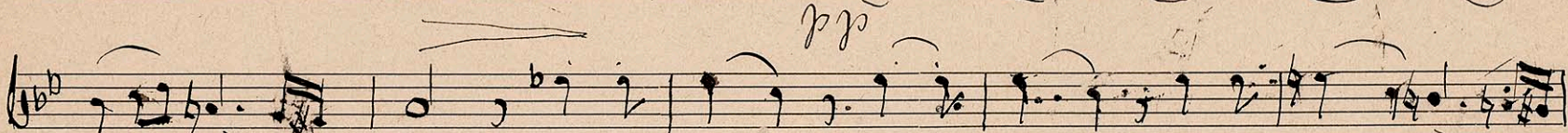
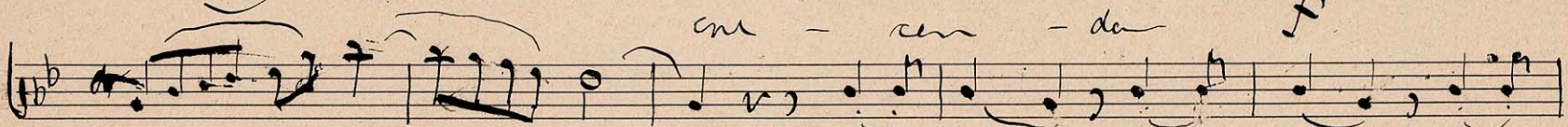
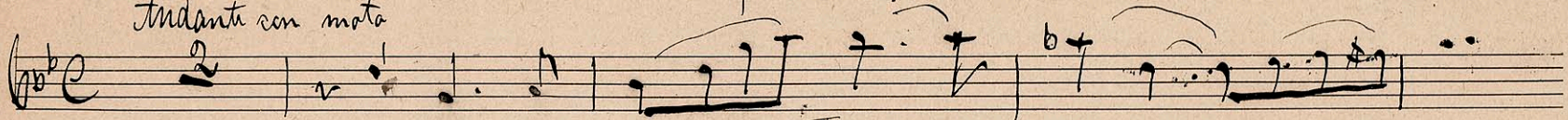
Handwritten musical notation on a page of aged, yellowed paper. The page features ten systems of five-line staves. The notation is sparse, consisting of small black dots and short horizontal lines, possibly representing a rhythmic or melodic sketch. The ink is dark and somewhat faded, and the paper shows signs of age, including foxing and staining. The bottom edge of the page is torn and irregular.





Romance for Oboe.

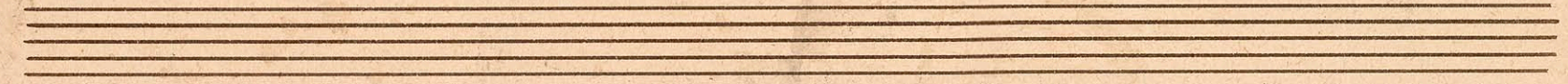
*Andante con moto*



mm 8812.0190



Handwritten musical notation on a single staff, featuring a treble clef, a key signature of two flats (B-flat and E-flat), and a common time signature (C). The notation includes a series of notes with stems, some beamed together, and rests. There are some ink smudges and corrections visible on the staff.



Handwritten musical notation on a single staff, featuring a treble clef, a key signature of two flats (B-flat and E-flat), and a common time signature (C). The notation includes a series of notes with stems, some beamed together, and rests. There are some ink smudges and corrections visible on the staff.





