

# Romance

1a

*Andante con moto*

(1957-58. 1003)

This page contains a handwritten musical score for piano and violin. The score is written on ten staves. The top staff is the violin part, and the remaining nine staves are the piano accompaniment. The piano part includes a right-hand staff and a left-hand staff. The music features complex rhythmic patterns, including many triplets and slurs. There are several dynamic markings, including *dim* (diminuendo) and *Ped* (pedal). The key signature has two flats (B-flat and E-flat), and the time signature is 3/4. The notation is dense and detailed, with many accidentals and articulation marks.

*molto accelerando*

Two empty musical staves at the bottom of the page, consisting of five lines each.

Handwritten musical score for the first system. The top staff is in treble clef, and the bottom staff is in bass clef. The key signature has two flats (B-flat and E-flat), and the time signature is 3/4. The music consists of several measures with notes, rests, and dynamic markings. The word "agitato" is written above the second measure of the bass staff. The word "rit:" is written above the fifth measure of the bass staff. There are also some slurs and accents.

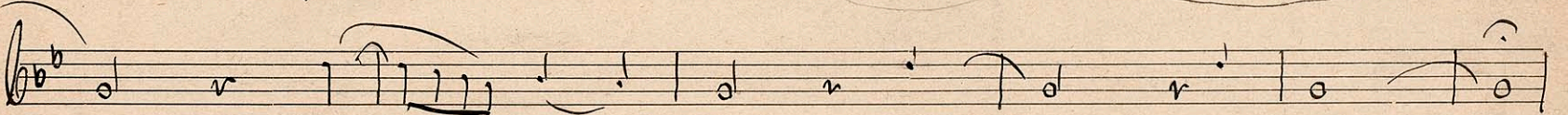
Handwritten musical score for the second system. The top staff is in treble clef, and the bottom staff is in bass clef. The key signature has two flats. The music includes dynamic markings such as "dim", "rit", and "mf". The instruction "Tempo I mo" is written above the second measure of the treble staff. There are also slurs and accents throughout the system.

Handwritten musical score for the third system. The top staff is in treble clef, and the bottom staff is in bass clef. The key signature has two flats. The music continues with various notes and rests.

Handwritten musical score for the fourth system. The top staff is in treble clef, and the bottom staff is in bass clef. The key signature has two flats. The music features complex rhythmic patterns, including triplets and sixteenth notes. There are also dynamic markings and slurs.

Handwritten musical score for the fifth system. The top staff is in treble clef, and the bottom staff is in bass clef. The key signature has two flats. The music includes the instruction "se - ren - de - r" written across the staves. There are also dynamic markings like "f" and slurs.

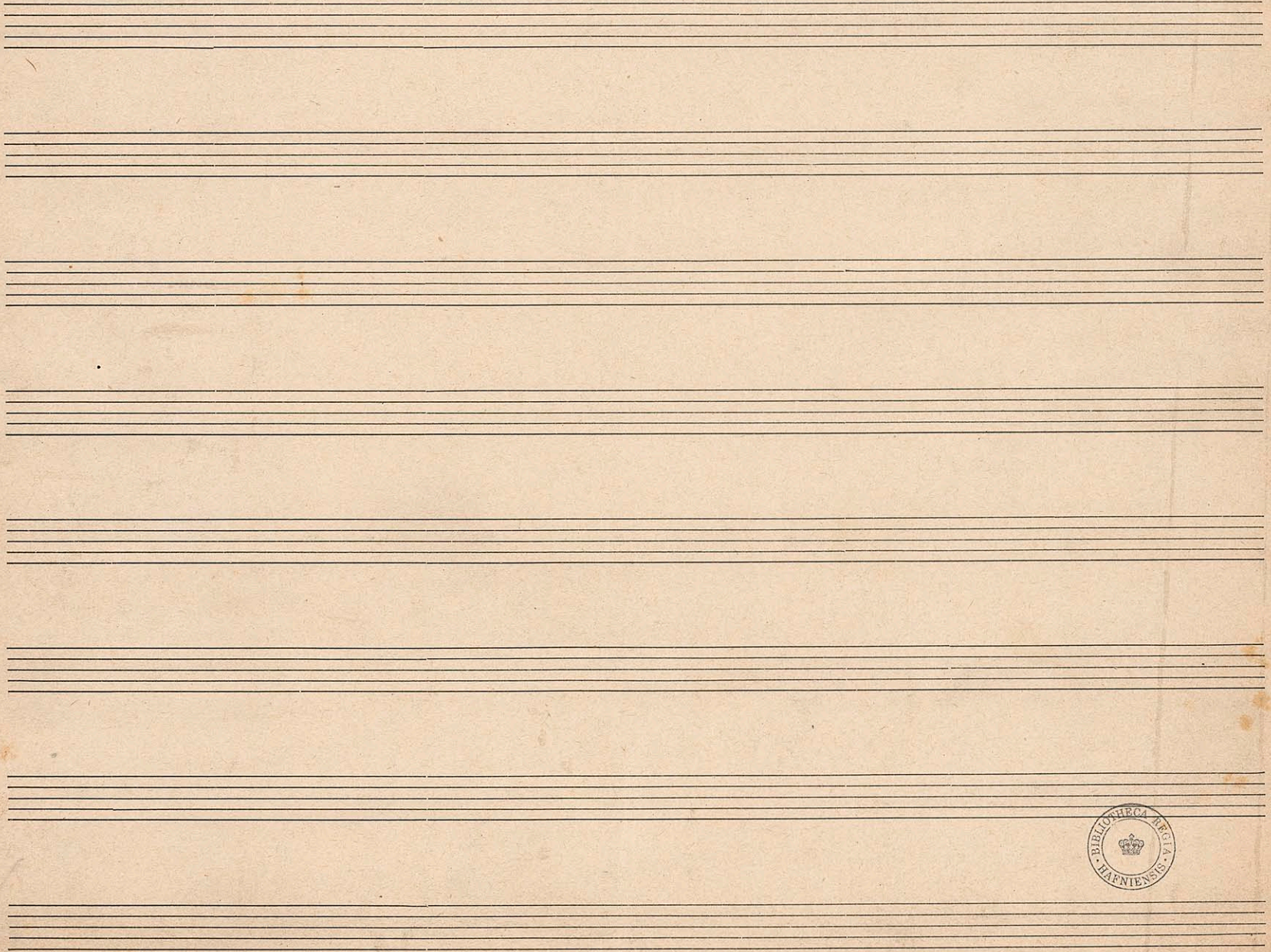
Two empty musical staves at the bottom of the page, consisting of five lines each.



*dim*



*dim*



*Intermezzo*

*Allegretto scherzando*

*Clav*

*Piano*

*Ped*

Handwritten musical notation on a single staff, featuring a treble clef and a key signature of one flat. The notation includes eighth and sixteenth notes, some beamed together, and rests. A dynamic marking of *pp* is visible towards the end of the staff.

Handwritten musical notation on two staves. The upper staff uses a treble clef and contains complex rhythmic patterns with many beamed notes. The lower staff uses a bass clef and contains simpler rhythmic patterns. A dynamic marking of *pp* is present in the lower staff.

Handwritten musical notation on a single staff, featuring a treble clef and a key signature of one flat. The notation includes eighth and sixteenth notes, some beamed together, and rests.

Handwritten musical notation on two staves. The upper staff uses a treble clef and contains complex rhythmic patterns with many beamed notes. The lower staff uses a bass clef and contains simpler rhythmic patterns. A dynamic marking of *pp* is present in the lower staff.

Handwritten musical notation on a single staff, featuring a treble clef and a key signature of one flat. The notation includes eighth and sixteenth notes, some beamed together, and rests.

Handwritten musical notation on two staves. The upper staff uses a treble clef and contains complex rhythmic patterns with many beamed notes. The lower staff uses a bass clef and contains simpler rhythmic patterns. A dynamic marking of *pp* is present in the lower staff.

Handwritten musical notation on a single staff, featuring a treble clef and a key signature of one flat. The notation includes eighth and sixteenth notes, some beamed together, and rests. A dynamic marking of *pp* is visible.

Handwritten musical notation on two staves. The upper staff uses a treble clef and contains complex rhythmic patterns with many beamed notes. The lower staff uses a bass clef and contains simpler rhythmic patterns. A dynamic marking of *pp* is present in the lower staff.

Handwritten musical notation on a single staff, featuring a treble clef, a key signature of one flat (B-flat), and a 4/4 time signature. The notation includes various note values, rests, and dynamic markings such as *f* and *mf*.

Handwritten musical notation consisting of two staves. The upper staff is in treble clef and the lower staff is in bass clef. Both staves show complex rhythmic patterns and chordal structures.

Handwritten musical notation on a single staff, continuing the piece with various note values and rests.

Handwritten musical notation consisting of two staves. The upper staff is in treble clef and the lower staff is in bass clef. The notation includes triplets and other rhythmic figures.

Handwritten musical notation on a single staff, marked with a '4.' in the left margin. It features a treble clef and includes a section with a fermata.

Handwritten musical notation consisting of two staves. The upper staff is in treble clef and the lower staff is in bass clef. The notation includes a section with a fermata and complex rhythmic patterns.

Handwritten musical notation on a single staff, continuing the piece with various note values and rests.

Handwritten musical notation consisting of two staves. The upper staff is in treble clef and the lower staff is in bass clef. The notation includes a section with a fermata and complex rhythmic patterns.

Handwritten musical notation on a single staff, featuring a treble clef, a key signature of one flat (B-flat), and a 3/4 time signature. The notation includes eighth and sixteenth notes, some beamed together, and rests. Dynamic markings include *mf* at the beginning and *p* later in the staff.

Handwritten musical notation on two staves, featuring a treble clef on the upper staff and a bass clef on the lower staff. The key signature is one flat. The upper staff contains eighth and sixteenth notes with slurs and dynamic markings *mp* and *p*. The lower staff contains eighth notes with slurs. There are some handwritten annotations in the right margin of the upper staff.

Handwritten musical notation on a single staff, featuring a treble clef, a key signature of one flat, and a 3/4 time signature. The notation includes eighth and sixteenth notes, some beamed together, and rests. A dynamic marking of *p* is present.

Handwritten musical notation on two staves, featuring a treble clef on the upper staff and a bass clef on the lower staff. The key signature is one flat. The upper staff contains eighth and sixteenth notes with slurs and dynamic markings *mf* and *pp*. The lower staff contains eighth notes with slurs.

Handwritten musical notation on a single staff, featuring a treble clef, a key signature of one flat, and a 3/4 time signature. The notation includes eighth and sixteenth notes, some beamed together, and rests. A dynamic marking of *pp* is present.

Handwritten musical notation on two staves, featuring a treble clef on the upper staff and a bass clef on the lower staff. The key signature is one flat. The upper staff contains eighth and sixteenth notes with slurs and dynamic markings *mf* and *pp*. The lower staff contains eighth notes with slurs.

Handwritten musical notation on a single staff, featuring a treble clef, a key signature of one flat, and a 3/4 time signature. The notation includes eighth and sixteenth notes, some beamed together, and rests.

Handwritten musical notation on two staves, featuring a treble clef on the upper staff and a bass clef on the lower staff. The key signature is one flat. The upper staff contains eighth and sixteenth notes with slurs. The lower staff contains eighth notes with slurs.



Handwritten musical notation on a single staff. It begins with a treble clef and a key signature of one sharp (F#). The notation includes quarter notes, eighth notes, and rests. There are some handwritten markings above the staff, possibly indicating phrasing or dynamics.

Handwritten musical notation on two staves. The lyrics "en - en da" are written between the staves. The top staff continues with the melody, and the bottom staff provides a harmonic accompaniment. The key signature remains one sharp.

Handwritten musical notation on a single staff. It features a continuation of the melody with several triplet markings (indicated by a '3' over the notes).

Handwritten musical notation on two staves. The top staff has a more complex melodic line with many triplet markings. The bottom staff continues with a steady accompaniment.

Handwritten musical notation on a single staff. It shows a melodic line with several rests and accidentals, continuing the piece.

Handwritten musical notation on two staves. This section is characterized by a very dense melodic passage in the top staff, consisting of many triplet markings. The bottom staff provides a consistent accompaniment.

Handwritten musical notation on a single staff. It shows a melodic line with some rests and accidentals, continuing the piece.

Handwritten musical notation on two staves. The top staff continues with the melody, and the bottom staff provides the accompaniment. The piece concludes with a final chord.

