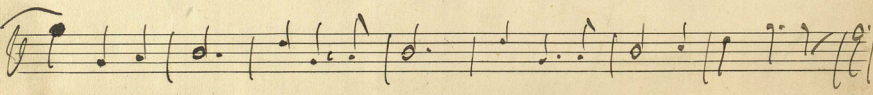
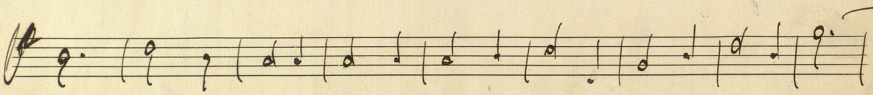
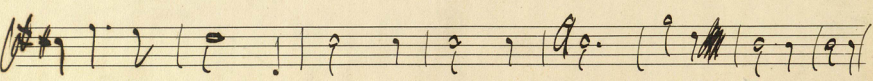
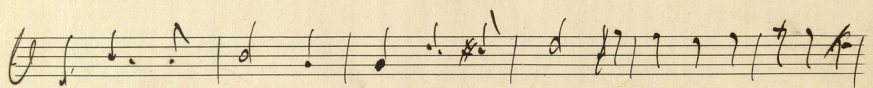
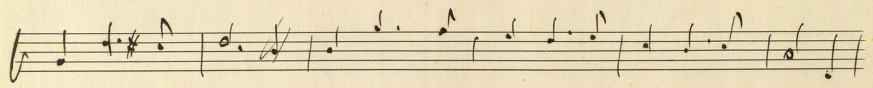
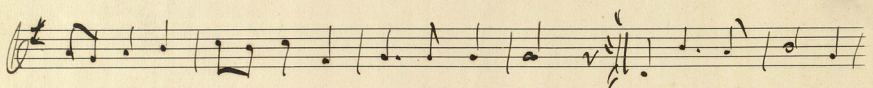
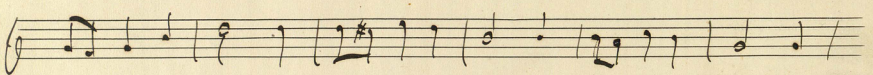
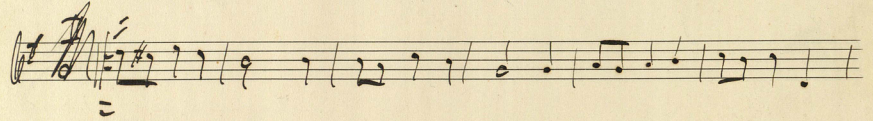
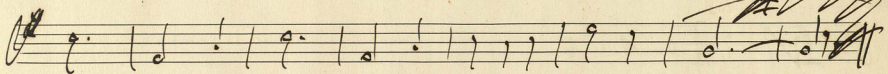
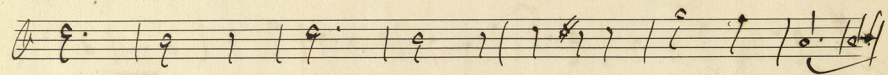
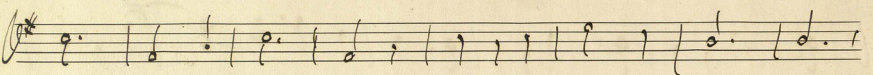
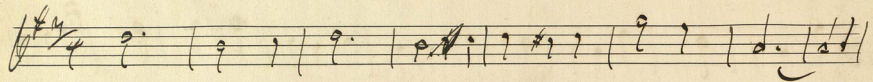
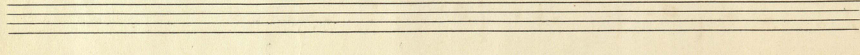
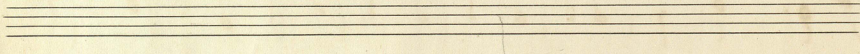
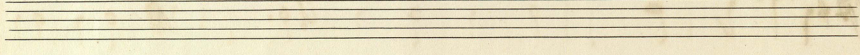
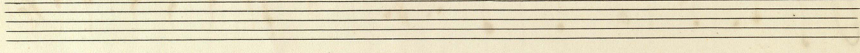
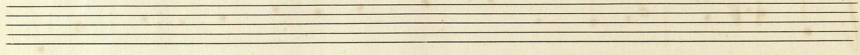
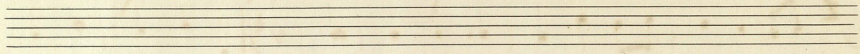
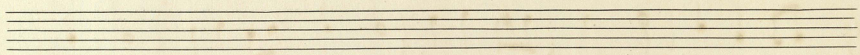
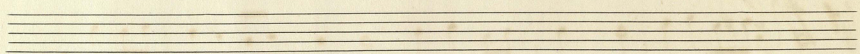
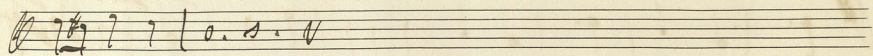
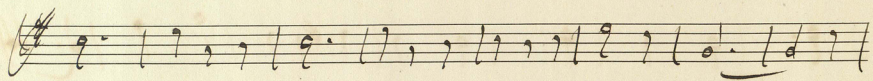
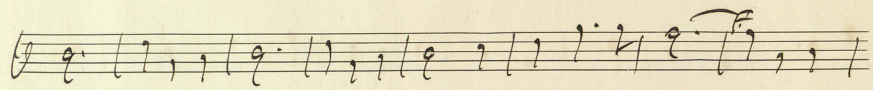
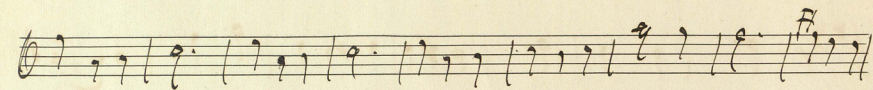
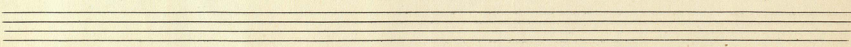
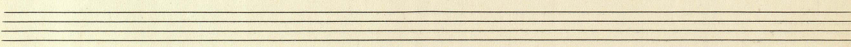
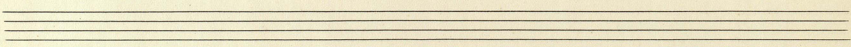
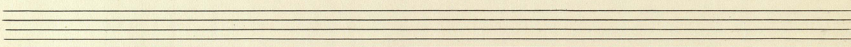
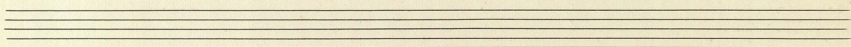
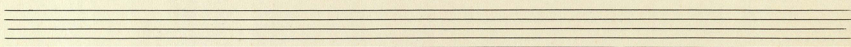
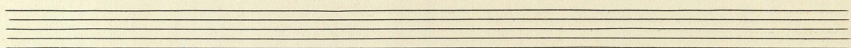
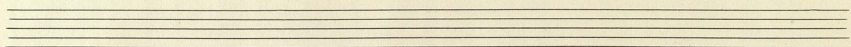
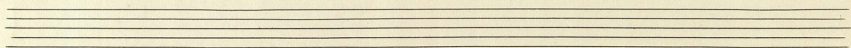
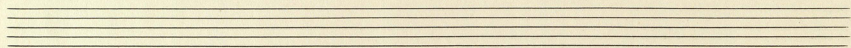
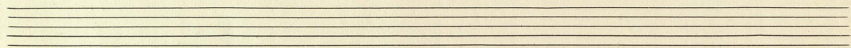
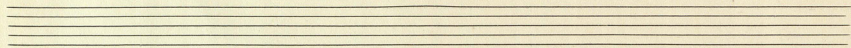


Handwritten scribble in the top right corner.









Handwritten musical notation on three staves. The top staff contains a treble clef, a key signature of one flat (B-flat), and a time signature of 3/4. The notation includes a whole note chord with a fermata, followed by a half note chord, and a quarter note chord. The middle staff contains a bass clef, a key signature of one flat, and a time signature of 3/4. The notation includes a whole note chord with a fermata, followed by a half note chord, and a quarter note chord. The bottom staff contains a treble clef and a key signature of one flat. The notation includes a whole note chord with a fermata, followed by a half note chord, and a quarter note chord.

